

FOR LEASE



LEAGUE CITY MARKETPLACE

SWC OF LEAGUE CITY PKWY & LAWRENCE RD | LEAGUE CITY, TEXAS 77573

Stephen J. Pheigaru, Managing Partner
(281) 995-2200 | Stephen@palodurocp.com

Jesse Hernandez, Senior Vice President
(281) 995-2200 | Jesse@palodurocp.com



Palo Duro Commercial Partners
950 Echo Lane, Suite 200-93, Houston, TX 77024
O: (281) 995-2200 | palodurocp.com



The information contained herein was obtained from sources believed reliable; however, Agent/Broker makes no guarantees, warranties or representations as to the completeness or accuracy thereof. The presentation of this property is submitted subject to errors, omissions, change of price or conditions, prior sale or lease, or withdrawal without notice.

LEAGUE CITY MARKETPLACE

SWC OF LEAGUE CITY PKWY & LAWRENCE RD | LEAGUE CITY, TEXAS 77573

FOR LEASE

AVAILABLE

3 ±1 ACRE PAD SITES
WILL SUBDIVIDE

LEASE RATE

CALL FOR PRICING

NNN

CALL FOR PRICING

PROPERTY HIGHLIGHTS

- Retail space and pad sites available
- Hard corner, signalized intersection
- Across from the Clear Creek ISD Education Village with ±4,282 students enrolled
- Less than 1 mile south of Kemah Boardwalk with over 3 million visitors annually
- Located in a strong employment corridor with over 51,000 daytime employees within 3-miles
- Close proximity to Johnson Space Center and Bayport Container Terminal

AREA RETAILERS

Kroger • H-E-B • Walgreens • Chick-fil-A • Sonic
Raising Cane's • Starbucks • Chipotle • McDonald's

TRAFFIC COUNTS

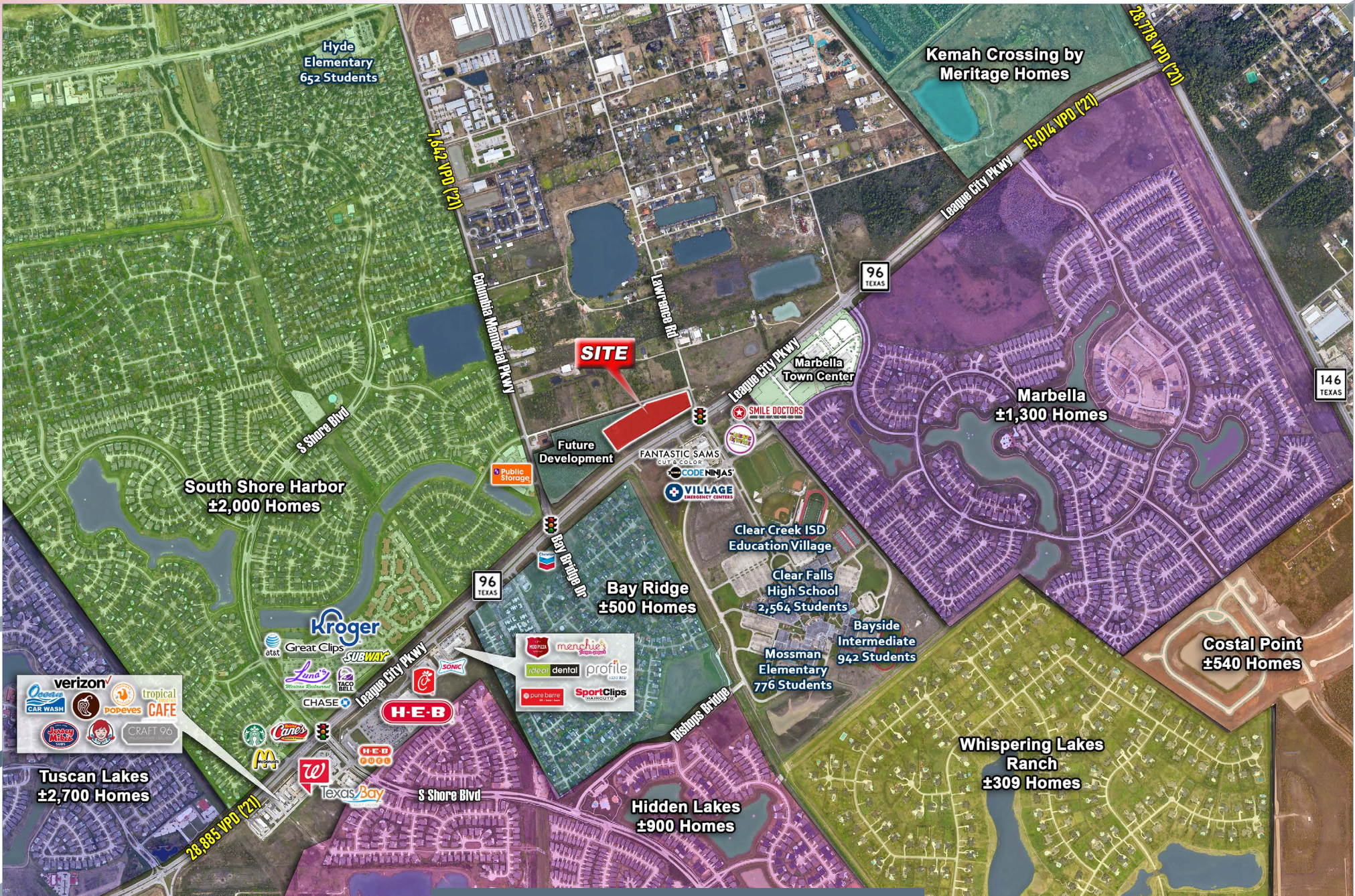
28,885 VPD on League City Parkway west of site
15,014 VPD on League City Parkway east of site
(TXDOT 2021)



DEMOGRAPHICS

	2022 POPULATION	2027 PROJ. POPULATION	DAYTIME POPULATION	AVERAGE HH INCOME
1 MILE	9,370	9,752	6,981	\$156,920
3 MILE	64,823	67,996	51,622	\$129,603
5 MILE	134,938	140,459	112,064	\$123,748

The information contained herein was obtained from sources believed reliable; however, Agent/Broker makes no guarantees, warranties or representations as to the completeness or accuracy thereof. The presentation of this property is submitted subject to errors, omissions, change of price or conditions, prior sale or lease, or withdrawal without notice.

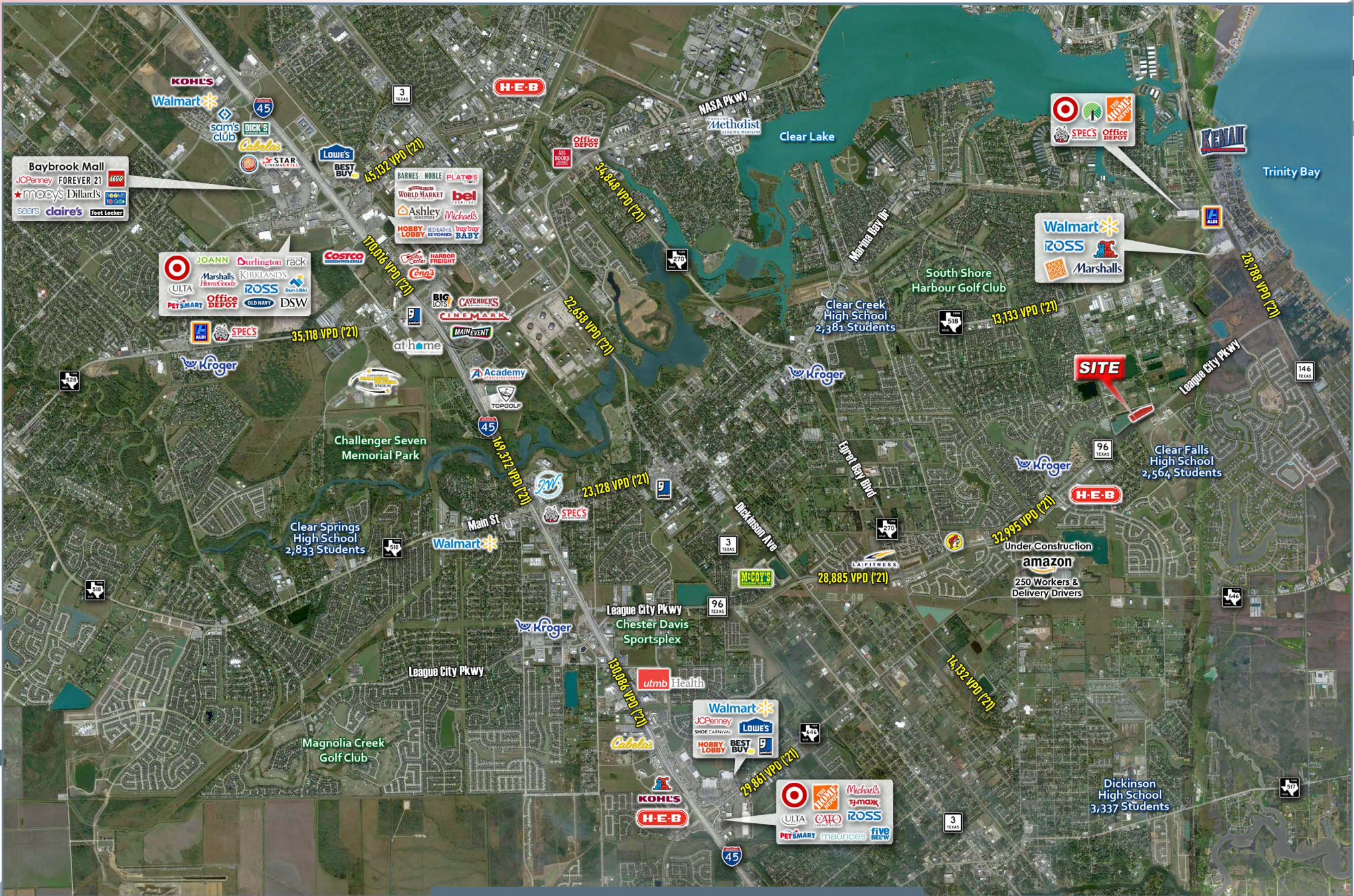


MARKET AERIAL



LEAGUE CITY MARKETPLACE - FOR LEASE

The information contained herein was obtained from sources believed reliable; however, Agent/Broker makes no guarantees, warranties or representations as to the completeness or accuracy thereof. The presentation of this property is submitted subject to errors, omissions, change of price or conditions, prior sale or lease, or withdrawal without notice.



TRADE AREA



LEAGUE CITY MARKETPLACE - FOR LEASE

The information contained herein was obtained from sources believed reliable; however, Agent/Broker makes no guarantees, warranties or representations as to the completeness or accuracy thereof. The presentation of this property is submitted subject to errors, omissions, change of price or conditions, prior sale or lease, or withdrawal without notice.

WOODCOCK STREET

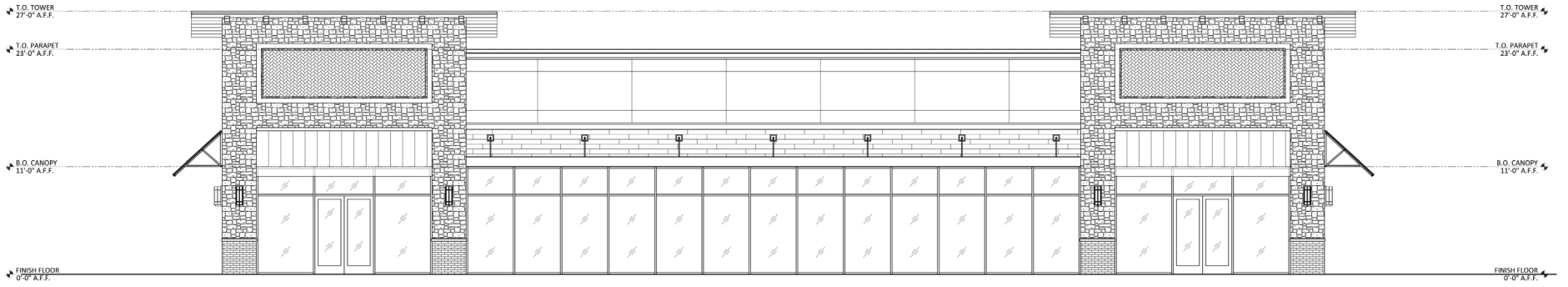


SITE PLAN

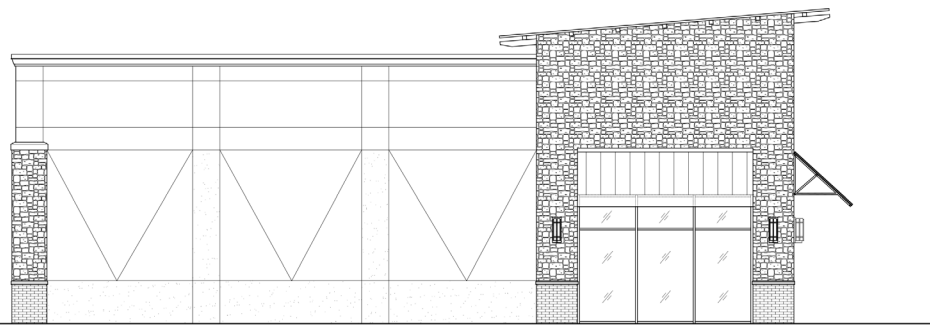


LEAGUE CITY MARKETPLACE - FOR LEASE

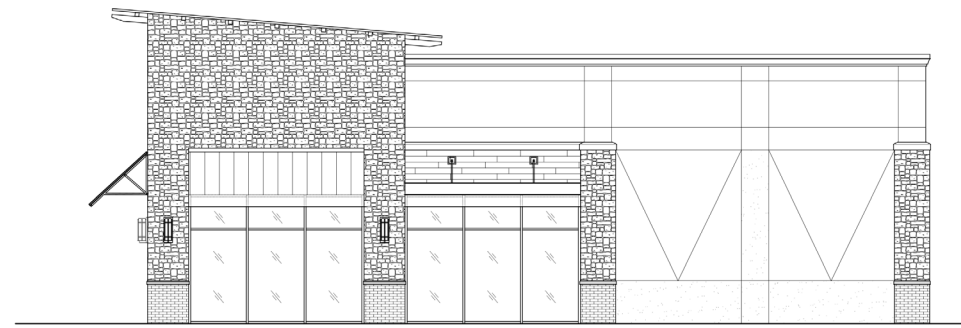
The information contained herein was obtained from sources believed reliable; however, Agent/Broker makes no guarantees, warranties or representations as to the completeness or accuracy thereof. The presentation of this property is submitted subject to errors, omissions, change of price or conditions, prior sale or lease, or withdrawal without notice.



01 EAST ELEVATION
SCALE: 1/8" = 1'-0"



02 SOUTH ELEVATION
SCALE: 1/8" = 1'-0"



03 NORTH ELEVATION
SCALE: 1/8" = 1'-0"

RENDERINGS



LEAGUE CITY MARKETPLACE - FOR LEASE

The information contained herein was obtained from sources believed reliable; however, Agent/Broker makes no guarantees, warranties or representations as to the completeness or accuracy thereof. The presentation of this property is submitted subject to errors, omissions, change of price or conditions, prior sale or lease, or withdrawal without notice.



Information About Brokerage Services

Texas law requires all real estate license holders to give the following information about brokerage services to prospective buyers, tenants, sellers and landlords.



TYPES OF REAL ESTATE LICENSE HOLDERS:

- A BROKER is responsible for all brokerage activities, including acts performed by sales agents sponsored by the broker.
- A SALES AGENT must be sponsored by a broker and works with clients on behalf of the broker.

A BROKER'S MINIMUM DUTIES REQUIRED BY LAW (A client is the person or party that the broker represents):

- Put the interests of the client above all others, including the broker's own interests;
- Inform the client of any material information about the property or transaction received by the broker;
- Answer the client's questions and present any offer to or counter-offer from the client; and
- Treat all parties to a real estate transaction honestly and fairly.

A LICENSE HOLDER CAN REPRESENT A PARTY IN A REAL ESTATE TRANSACTION:

AS AGENT FOR OWNER (SELLER/LANDLORD): The broker becomes the property owner's agent through an agreement with the owner, usually in a written listing to sell or property management agreement. An owner's agent must perform the broker's minimum duties above and must inform the owner of any material information about the property or transaction known by the agent, including information disclosed to the agent or subagent by the buyer or buyer's agent.

AS AGENT FOR BUYER/TENANT: The broker becomes the buyer/tenant's agent by agreeing to represent the buyer, usually through a written representation agreement. A buyer's agent must perform the broker's minimum duties above and must inform the buyer of any material information about the property or transaction known by the agent, including information disclosed to the agent by the seller or seller's agent.

AS AGENT FOR BOTH - INTERMEDIARY: To act as an intermediary between the parties the broker must first obtain the written agreement of each party to the transaction. The written agreement must state who will pay the broker and, in conspicuous bold or underlined print, set forth the broker's obligations as an intermediary. A broker who acts as an intermediary:

- Must treat all parties to the transaction impartially and fairly;
- May, with the parties' written consent, appoint a different license holder associated with the broker to each party (owner and buyer) to communicate with, provide opinions and advice to, and carry out the instructions of each party to the transaction.
- Must not, unless specifically authorized in writing to do so by the party, disclose:
 - that the owner will accept a price less than the written asking price;
 - that the buyer/tenant will pay a price greater than the price submitted in a written offer; and
 - any confidential information or any other information that a party specifically instructs the broker in writing not to disclose, unless required to do so by law

AS SUBAGENT: A license holder acts as a subagent when aiding a buyer in a transaction without an agreement to represent the buyer. A subagent can assist the buyer but does not represent the buyer and must place the interests of the owner first.

TO AVOID DISPUTES, ALL AGREEMENTS BETWEEN YOU AND A BROKER SHOULD BE IN WRITING AND CLEARLY ESTABLISH:

- The broker's duties and responsibilities to you, and your obligations under the representation agreement.
- Who will pay the broker for services provided to you, when payment will be made and how the payment will be calculated.

LICENSE HOLDER CONTACT INFORMATION: This notice is being provided for information purposes. It does not create an obligation for you to use the broker's services. Please acknowledge receipt of this notice below and retain a copy for your records.

950 Maverick Partners, LLC d/b/a Palo Duro Commercial Partners	9012690		281-995-2200
Licensed Broker /Broker Firm Name or Primary Assumed Business Name	License No.	Email	Phone
Jeffrey Stephen Hayes	491387	Jeff@palodurocp.com	281-995-2200
Designated Broker of Firm	License No.	Email	Phone
Jeffrey Stephen Hayes	491387	Jeff@palodurocp.com	281-995-2200
Licensed Supervisor of Sales Agent/ Associate	License No.	Email	Phone
Jesse Hernandez	660459	Jesse@palodurocp.com	281-995-2200
Sales Agent/Associate's Name	License No.	Email	Phone

Buyer/Tenant/Seller/Landlord Initials

Date

Regulated by the
Texas Real Estate Commission

Information available at www.trec.texas.gov

IABS 1-0